

FOREWORD

Trading Corporation of Bangladesh (TCB) is the National Trading House under the Ministry of Commerce, Govt. of the People's Republic of Bangladesh. During the time of crisis TCB rendered valuable services to the people. Just after liberation TCB imported huge quantity of essential goods to meet the immediate need of the people. Industrial raw materials were also imported by TCB for small enterprises. I am happy to mention that TCB is the pioneer of export of Ready-Made Garments (RMG), which is now the largest exportable product of the country. It is a fact that in the new context of globalization and free market economy the importance of public enterprises has gone down. As a result, the import and export of TCB have become limited. But yet TCB has a role to play. In the new situation, TCB's role would be a redefined one. TCB would watch the working of the market and take necessary action, including importation if necessary, accordingly. During the financial year 2003-2004, TCB's export was confined to some limited items. In the context of present free market economy, TCB having no item of its own, our export activities will still be continuing to earn foreign currency. At present TCB has been assigned by the Government of the People's Republic of Bangladesh to sell essential commodities like Masur Dal, sugar direct to the consumers by open truck and through some selected sale center within the capital city & some other Divisional towns. Besides, TCB has been entrusted with the job of regular monitoring of the prices of essential commodities in the local market vis-a-vis the prices in the International market. TCB prepares a daily report on the price situation of the essential commodities and submits the report to various authorities including the Prime Minister's Office. TCB also prepares several other reports for the Government suggesting ways and means to stabilize the prices of essential commodities in the local market.



INTRODUCTION

In the backdrop of scarcities of essential consumer items and industrial raw materials after the liberation of Bangladesh in 1971, the Trading Corporation of Bangladesh(TCB) was established under President's Order No. 68 of 1972.

The main functions of the Corporation are:

1. To carry on the business of imports and exports in accordance with the policy of the Government.
2. To arrange for the sale and distribution of the imported goods and to appoint dealers/agents etc. for this purpose as per Government directives.
3. To do all other acts and things connected with or ancillary thereto.
and
4. Monitoring of prices of essential commodities in the local market vis-a-vis prices in the international market.

BOARD OF DIRECTORS

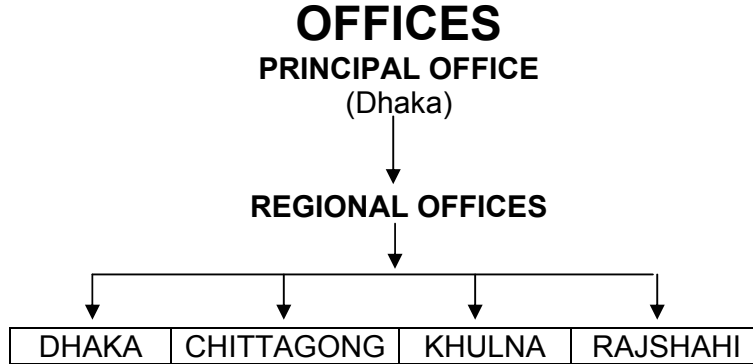
- The Trading Corporation of Bangladesh is an autonomous body under the Ministry of Commerce, Government of the People's Republic of Bangladesh. The Corporation is headed by a Chairman. The administration is vested in the Board of Directors of TCB.
- At present Board of Directors of TCB consists of following two members



- **CHAIRMAN**
Mr. Md. Khalilur Rahman
(Additional Secretary to the Government)



- **DIRECTOR**
Md. Mahfuzar Rahman Sarker
(Deputy Secretary to the Government.)



MANPOWER
(From 1972 to 12-11-2009)

1972	1984	1995	2002	2004	2005	2006	2007	2009
431	1336	714	235	231	223	208	182	225

CATEGORY WISE PRESENT MANPOWER

CALSS	APPROVED	EXISTING	VACANT POST	EXCESS
CALSS-I	60	23	37	-
CALSS-II	100	79	21	-
CALSS-III	65	67	-	2
TOTAL	225	169	58	

**CATEGORY WISE MANPOWER AS PER ORANOGRAM OF 1995 (714)
(AFTER GOLDEN HANDSHAKE-1993)**

CLASS-I	Chairman	01
	Director	03
	Secretary	01
	Chief Officer	09
	DS/SE/MO/XEN/System Analyst	29
	DSE/Programmer/SO/Protocol Officer	52
	AE/Asstt. Programmer/Asstt. Engineer	93
	TOTAL	187
CLASS-II	Sub-Asstt. Engineer	01
CLASS-III		288
CALSS-IV		238
	TOTAL	714

**CATEGORY WISE MANPOWER AS PER ORDER OF
MINISTRY OF COMMERCE IN THE YEAR 2009 (225)**

Class	Designation	Approved	Existing	Vacant	Excess
Class-I	Chairman	01	01	-	-
	Director	01	01	-	-
	Secretary	01	01	-	-
	Chief Officer	04	02	02	-
	DS/SE/XEN	16	05	10	-
	DSE/Asst Engr	20	02	18	-
	Asst. Executive	17	12	05	-
Class-II	-	-	-	-	-
Class-III		100	79	21	-
Class-IV		65	67	0	2
	TOTAL	225	169	58	2

**TCB AT A GLANCE FINANCIAL REPORT
(1972 – 2009)**

(Fig. in crores)

IMPORT (Upto June'09)	Tk. 2495.79
EXPORT (Upto June'09)	Tk.1,586.43
ASSETS / PROPERTIES	Tk. 134.38
PROFIT	Tk. 313.52
LOSS	Tk. 32.00
CONTRIBUTION TO NATIONAL	Tk. 29.90
Exchq. Sales Tax, VAT, Income Tax, Duties etc. Paid to Govt.	Tk.1,348.72

FIXED ASSETS / PROPERTIES

(Fig. in Crore Taka)

Sl#	Description	Area of Land	Purchase Value	Present Market Value
01.	Head Office, Dhaka	1.85 Bighas	0.271	38.54
02.	Regional Office, Dhaka	0.187 Bighas	0.176	2.37
03.	Regional Office, Chittagong	25.57 Bighas	0.694	43.24
04.	Regional Office, Khulna	1.03 Bighas	0.060	5.03
05.	344/C, Tejgaon, Godown, Dhaka	1.00 Bighas	0.120	6.10
06.	230, Tejgaon Godown, Dhaka	3.025 Bighas	1.309	15.10
07.	Dapa Godown, Fatullah, Narayanganj	1.845 Bighas	0.160	7.59
08.	Housing Complex Uttara, Dhaka	8.181 Bighas	0.205	16.41
	TOTAL	42.688 Big	2.995	134.38

ROLE OF TCB

EXPORT

- TCB started export activities from its very inception. During the year of 1973-92, TCB signed a good number of Special Trading Agreement (STA) / Counter Trading Agreement (CTA) with multinational business houses for mobilizing faster growth of export, specially non-traditional items. TCB saved hard-earned Foreign Currency through importation of certain essential items against export of goods under Special Trading Agreement (STA)/ Counter Trading Agreement (CTA).
- TCB was the pioneer in export of Readymade Garments from Bangladesh for the first time in 1975, which has now become the main export item of the country. In the context of present free market economy and having no product of its own, TCB's volume of export has decreased. However, TCB has been continuing its export activities.
- **Main export items were:**
- Jute Goods, Raw Jute, Newsprint, Finished Leather, Urea Fertilizer, Ceramic Products, Wet-blue leather, Frozen shrimps, Tamarind with seeds, Human hair wastes, Handicrafts, Safety matches, Tea, Molasses, Hard Board, Ginger, Froglegs, Partex, Ready-made Garments etc.

Export since 1972

(Fig. in crore Taka)

Year	Taka	Year	Taka	Year	Taka
1972-73	4.73	1985-86	131.45	1998-99	11.44
1973-74	7.51	1986-87	154.71	1999-00	12.22
1974-75	10.31	1987-88	183.87	2000-01	17.39
1975-76	10.37	1988-89	240.43	2001-02	4.52
1976-77	11.04	1989-90	117.02	2002-03	1.01
1977-78	27.26	1990-91	129.33	2003-04	1.64
1978-79	20.49	1991-92	90.43	2004-05	2.37
1979-80	29.82	1992-93	54.11	2005-06	1.19
1980-81	27.87	1993-94	25.59	2006-07	1.63
1981-82	45.05	1994-95	26.52	2007-08	2.05
1982-83	34.83	1995-96	19.69	2008-09	-
1983-84	40.48	1996-97	10.31	2009-10	0.84
1984-85	66.95	1997-98	12.85	TOTAL	1586.43

IMPORT

- TCB played a vital & significant role in the Import Trade during the initial years after liberation. By importing a good number of essential consumer goods and industrial raw materials, it stabilized the prices in the market, as well as provided a great relief to the general consumers and small industrial units by supplying goods at reasonable prices.
- During the period of 1972-77 TCB used to import as many as 70 commodities such as Cement, Milk Food, C.I. Sheet, Drugs & Medicine, Textile, Yarn, Soda Ash, Auto Rickshaw, Salt, Sugar, Onion, M.S Billets, Al. Ingot, Pig-Iron, Zinc Ingot, Arms & Cartridges, Timber etc. But due to introduction of free market economy, TCB's role in the field of import has become very limited. As a result, functions and activities of TCB have largely been squeezed.
- Since fair trade has yet to be started, TCB's role is significant to control the market. In fact, TCB's interventionist role can never be denied. Whenever there has been any shortfall in the supply of any essential consumer goods in the market, TCB has, on the advice of the Government, made arrangement for emergency import of the said items in order to ensure adequate supply and to stabilize the market price. During 2005-06, in view of unusual price situation of some essential commodities in the local market, TCB imported Red Lentils & procured onion & gram(Chhola) from local market & sugar from BSFIC for direct sale at a fair price.

Import since 1972

(Fig. in crore Taka)

Year	Taka	Year	Taka	Year	Taka
1972-73	143.36	1985-86	138.64	1998-99	10.65
1973-74	97.50	1986-87	145.36	1999-00	28.58
1974-75	67.31	1987-88	61.09	2000-01	305.91
1975-76	73.90	1988-89	219.20	2001-02	56.40
1976-77	24.19	1989-90	84.20	2002-03	-
1977-78	59.43	1990-91	65.06	2003-04	-
1978-79	97.54	1991-92	45.20	2004-05	-
1979-80	97.08	1992-93	53.78	2005-06	36.52
1980-81	119.19	1993-94	48.52	2006-07	22.26
1981-82	135.43	1994-95	11.04	2007-08	-
1982-83	68.41	1995-96	40.05	2008-09	-
1983-84	73.40	1996-97	9.64	2009-10	-
1984-85	47.60	1997-98	9.35	TOTAL	2495.79

CLEARANCE, MOVEMENT AND STORAGE

- All the cargo imported by the Corporation are handled by a particular Division of the Corporation right from the arrival to disposal. The stages of handling are clearance from the port, movement to various destinations in the country, storage and disposal thereof as per normal practice.
- For effective execution of the task entrusted to the Division, advance planning is made for receipt of cargo, its movement within the country after clearance through the port of Chittagong and Mongla. The Corporation appoints various agents like Shipping Agents, C&F Agents, Stevedores, River Carriers, Labour Handling Contractors and Surveyors for Clearance, Movement, Storage and delivery of the cargo. By proper handling of various cargo TCB earned US\$ 31510.00 as despatch money during the year 2001-2002.

SALES & DISTRIBUTION

- The main objective of TCB is to make the goods available to the consumers. Keeping in view of this the goods are distributed through the appointed dealers in Dhaka, Chittagong, Khulna, Barisal, Sylhet and Rajshahi Divisions. In case of sugar, TCB used to deal with the mentioned 6 division, Chittagong and Sylhet Division as per government decision.
- TCB was the sole importer of small Arms & Cartridges & these were allotted to the licence holders issued by the concerned authority. TCB has also 68 Arms dealers throughout the country. During the year 2001-2002 TCB sold Sugar, Arms & Cartridges, Salt and Pesticides worth Tk.285.00 crore.
- During the year 2009-10 TCB handled 4850 M. Tons of Sugar, 369.745 M. Tons of Soyabean Oil, 12,500 M. Tons of Palm Oil till date.

MARKET STUDY AND RESEARCH

- Consequent upon abolishment of the Dept. of Pricing and Market Intelligence (PMI) with effect from 31-12-89, TCB started to discharge the functions of market intelligence from January, 1990 as per instruction of the Ministry of Commerce vide their letter No.5(15)/89-Ad-3/448 dt.24.12.89. After collecting the retail prices of daily essential commodities from different markets of Dhaka City, TCB prepares a good number of statements & reports and send the same daily to different Ministries/ Offices/Agencies.
- To bring dynamism in monitoring, TCB, as per approval of the Ministry of Commerce, has formed Market Study and Research Cell. From the year 2001-2002 the officials of this cell has been visiting different markets of Dhaka City and collecting the retail & international prices of essential commodities and preparing reports and being distributed to the Office of the Hon'ble Prime Minister, different Ministries / Offices/Agencies everyday.
- Moreover, this cell, after examining market prices also send reports from time to time to the Ministry of Commerce. Concerned Officials of the Cell, after contacting with the Directorate of Agriculture Marketing under Ministry of Agriculture, Bangladesh Bank, Producers, Importers & Traders of different items, NBR, Sea and Landports, collect information on demand, supply, production, shortage, international prices, import necessity etc. and send comments and suggestions to the Ministry of Commerce for necessary action.

FINANCE AND ACCOUNTS

- TCB is a self financing organization. It is to be mentioned that the Corporation did not receive any cash capital contribution from the Government since its inception in 1972.
- From 1972-73 to 2006-09, TCB paid Income Tax amounting to Tk. 149.62 crore, Tk. 1,199.10 crore as Custom duties, VAT & other Government dues & Tk.29.90 crore as contribution to the National exchequer as profit share.

PROFIT AND LOSS (1972-2009)

(Fig. in crore Taka)

Year	Profit	Loss	Income Tax Paid
1972-73	5.22	-	3.16
1973-74	9.49	-	5.70
1974-75	13.40	-	11.10
1975-76	9.38	-	5.06
1976-77	11.75	-	8.00
1977-78	0.68	-	0.46
1978-79	8.11	-	4.54
1979-80	14.91	-	8.11
1980-81	6.60	-	3.84
1981-82	5.05	-	3.03
1982-83	5.37	-	3.61
1983-84	7.10	-	4.26
1984-85	3.20	-	2.12
1985-86	6.91	-	4.49
1986-87	11.63	-	6.98
1987-88	10.24	-	6.15
1988-89	11.33	-	6.80
1989-90	8.62	-	5.20
1990-91	1.56	-	1.05
1991-92	4.96	-	2.73
1992-93	-	9.36	-
1993-94	26.46	-	8.54
1994-95	3.13	-	1.48
1995-96	-	1.53	-
1996-97	-	3.77	-
1997-98	-	1.85	-
1998-99	-	1.52	-
1999-00	-	2.70	-
2000-01	13.21	-	5.28
2001-02	102.76	-	35.96
2002-03	-	● 9.43	-
2003-04	2.78	-	1.10
2004-05	3.05	-	1.14
2005-06	1.16	-	0.82
2006-07	-	0.25	-
2007-08	-	1.59	-
2008-09	5.46	-	-
TOTAL	313.52	32.00	150.71

● Due to payment against golden handshake from TCB's own fund.

AVERAGE MONTHLY INCOME & EXPENDITURE (2008 – 2009)

(Fig. in crore Taka)

Income		Taka	Expenditure		Taka
a)	Bank Interest	0.79	a)	Salary	0.14
b)	Rental Income	0.16	b)	Other Allowances	0.24
c)	Earning from Seized Goods (Sugar & Salt) and other income	0.12	c)	Administrative Expenses	0.12
				Operational	0.02
				Bldg. Construction	0.12
	Total	1.07		Total	0.64
				Monthly Savings (approx.)	0.43

PRESENT FUNCTIONS OF TCB

A. MARKET INTELLIGENCE:

- TO SELL ESSENTIAL COMMODITIES LIKE MASUR DAL, SUGAR DIRECT TO THE CONSUMERS BY OPEN TRUCK AND THROUGH SOME SELECTED SALE CENTER WITHIN THE CAPITAL CITY & SOME OTHER DIVISIONAL TOWNS. DAILY MARKET PRICE MONITORING OF ESSENTIAL COMMODITIES OF DHAKA CITY.
- COLLECTION OF INFORMATION REGARDING COMPARATIVE STATEMENT OF LAST 3 YEAR'S DEMAND, PRODUCTION, SUPPLY, STOCK AND MARKET POSITION OF GOODS.
- DAILY PRICE MONITORING OF INTERNATIONAL MARKET PRICE.
- DAILY COLLECTION OF INFORMATION RELATING TO IMPORT, CLEARANCE, CUSTOM DUTIES, VAT ON VARIOUS GOODS COMING THROUGH CHITTAGONG PORT AND MONITORING PRICE OF ESSENTIAL COMMODITIES OF CHITTAGONG CITY.
- DAILY PRICE MONITORING OF ESSENTIAL COMMODITIES OF KHULNA CITY AND COLLECTION ON INFORMATION RELATING TO IMPORT, CLEARANCE, CUSTOM DUTIES, VAT ON ESSENTIAL GOODS COMING THROUGH BENAPOLE LANDPORT & RAJSHAHI COMMISSARIATE.

B. SELLING OF SEIZED GOODS

- SALE OF CONFISCATED GOODS (SUGAR AND SALT) THROUGH TENDER. TCB EARNED TK. 10.51 CRORE SINCE 1998-2009 BY SELLING OF SEIZED GOODS.